



# T500

ALUMINUM SERIES

## Single Hung | Fixed



Product Material  
**Aluminum**











Frame Depth  
**3 1/4"**



Rating  
Single Hung: AW50  
Fixed: HC50



East Halls  
State College, PA  
General Contractor: Penn State University  
Contractor: Clayco, Inc.  
Comm. Window Dist.: Nittany Bldg. Specialties

 <b>Design Pressure</b> Hung: 50 Fixed: 50	 <b>U-Value*</b> Hung: .37 - .34 Fixed: .25 - .31
 <b>Air Infiltration</b> Hung: <.10 Fixed: <.10	 <b>SHGC*</b> Hung: .14 - .50 Fixed: .15 - .36
 <b>Water Resistance</b> Hung: 10 Fixed: 12	 <b>CR*</b> Hung: 39 - 40 Fixed: 50 - 60
 <b>OITC<sup>x</sup></b> Hung: Contact Quaker Fixed: Contact Quaker	 <b>STC<sup>x</sup></b> Hung: Contact Quaker Fixed: Contact Quaker

\*-Ranges based on multiple Low-E/Argon I.G. combinations  
x-Ranges based on multiple I.G. combinations

## FEATURES:

- ▶ Architectural grade aluminum frame
- ▶ Thermally-broken framing with pour-and-debridge technology
- ▶ 1" insulating glass
- ▶ Gravity lock hardware on operating model
- ▶ Tall, interior sill
- ▶ Side load Single Hung
- ▶ Two Fixed models: Wide Rail and Narrow Rail
- ▶ With or without fin system
- ▶ 30+ "Quick-Pick" colors, with unlimited custom colors available
- ▶ Standard High-Performance 2604 Powder Paint Finish (an FGIA Specification)
- ▶ Optional Upgrade to 2605 Powder Paint Finish (an FGIA Specification)
- ▶ Single Hung contains Half Screen with extruded aluminum frame
- ▶ Blast-tested

[www.QuakerCommercialWindows.com](http://www.QuakerCommercialWindows.com)

Information listed is deemed accurate as of date shown. Quaker Windows reserves the right to change or discontinue any product, feature or option without notice.

August, 2023 V1



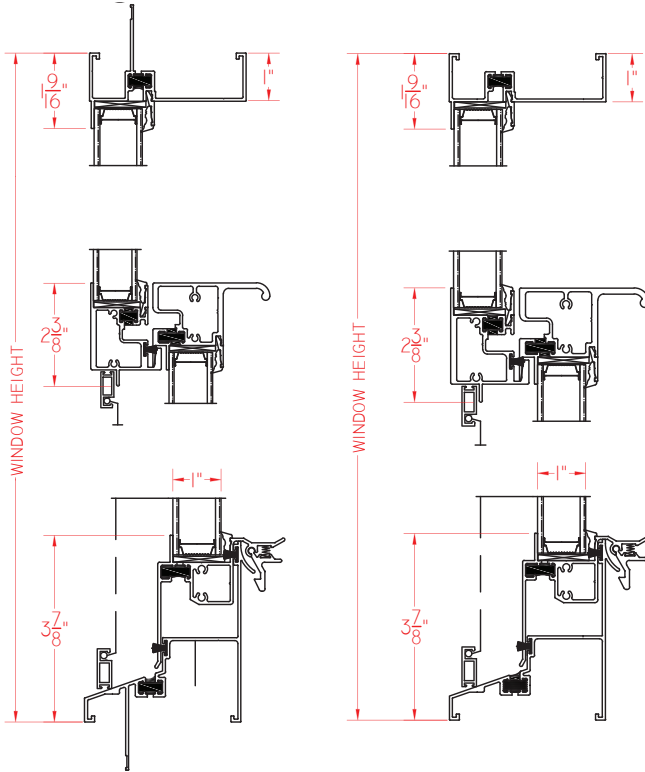
# T500

ALUMINUM SERIES

## T500 Series Hung (AW50)

*Shown with integral nailing fin*

*Shown without integral nailing fin*



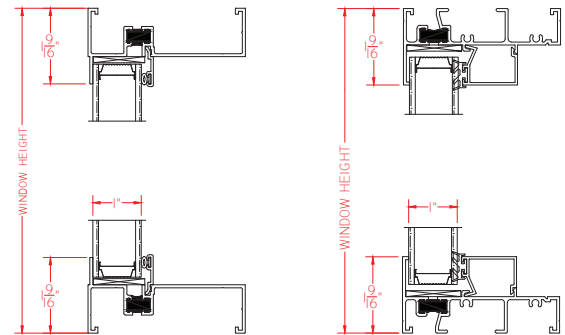
## T500 Series Fixed (HC50)

*Direct Set*

*Shown with integral nailing fin*

*Direct Set Narrow Rail*

*Shown with integral nailing fin*



*All ratings listed are NAFS certified.*



1201 Walnut St.  
Cincinnati, OH  
Developer: 1201 Walnut LLC  
Contractor: RJ Beischel Building Co.  
Comm. Window Dist.: Andy's/Robinson Glass



**QuakerCommercialWindows.com**  
**1-800-347-0438**  
**Commercial@quakerwindows.com**